

## LEOBOX 100/200

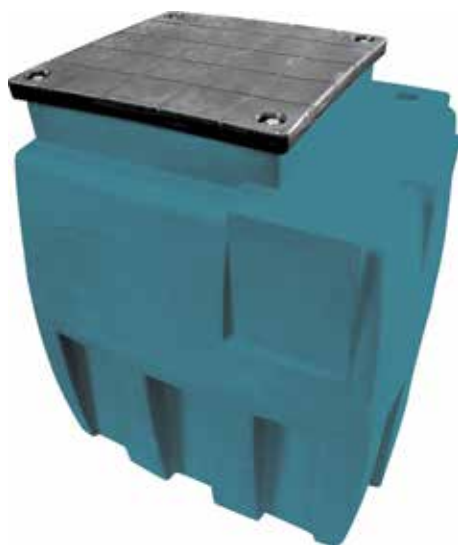
STAZIONE AUTOMATICA DI SOLLEVAMENTO PER 1 POMPA 1 PUMP DOMESTIC LIFTING STATION

### APPLICAZIONE

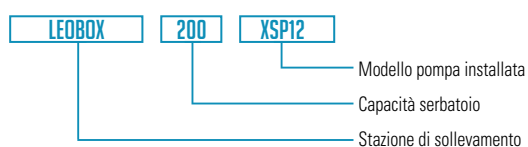
- Vasche di raccolta acque reflue caratterizzate da costruzione robusta, di facile installazione ed equipaggiate di tutti gli accessori necessari. Serbatoio in polietilene da lt. 200 completo di guarnizione in EPDM espanso e bulloneria in acciaio inox AISI 304. Disponibile nella versione base con accessori e nella versione allestita completa di pompa.

### APPLICATION

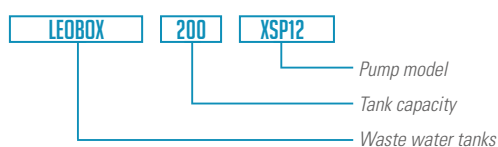
- Waste water collection tanks characterised by a sturdy construction, ease of installation and equipped with a necessary accessories. Polyethylene tank of 200 litres complete with cover with expanded EPDM gasket and stainless steel AISI 304 bolts. Available in the basic version with accessories and equipped version complete with pump.



### CODICE IDENTIFICATIVO



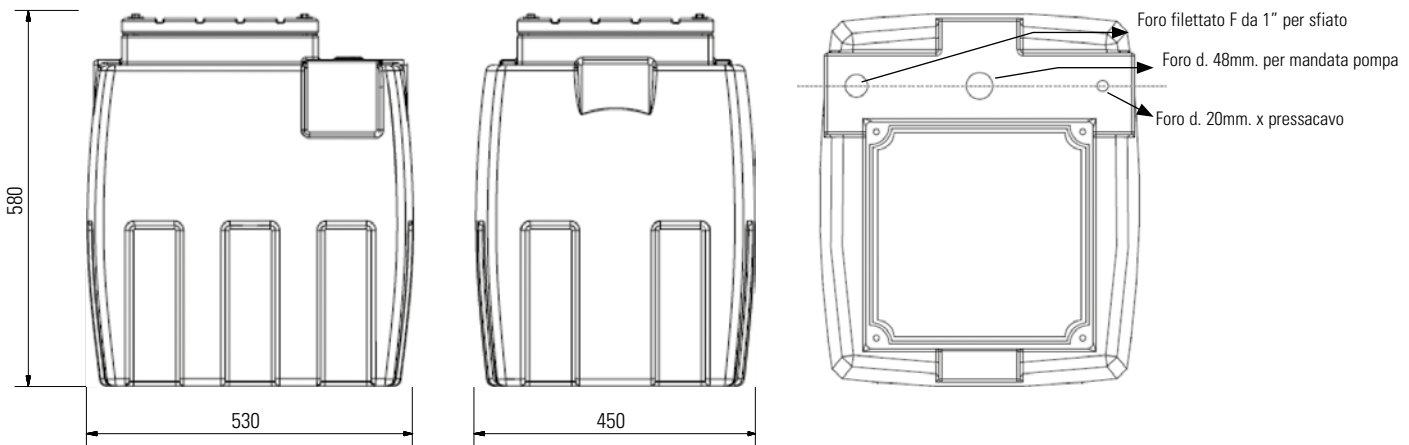
### IDENTIFICATION CODE



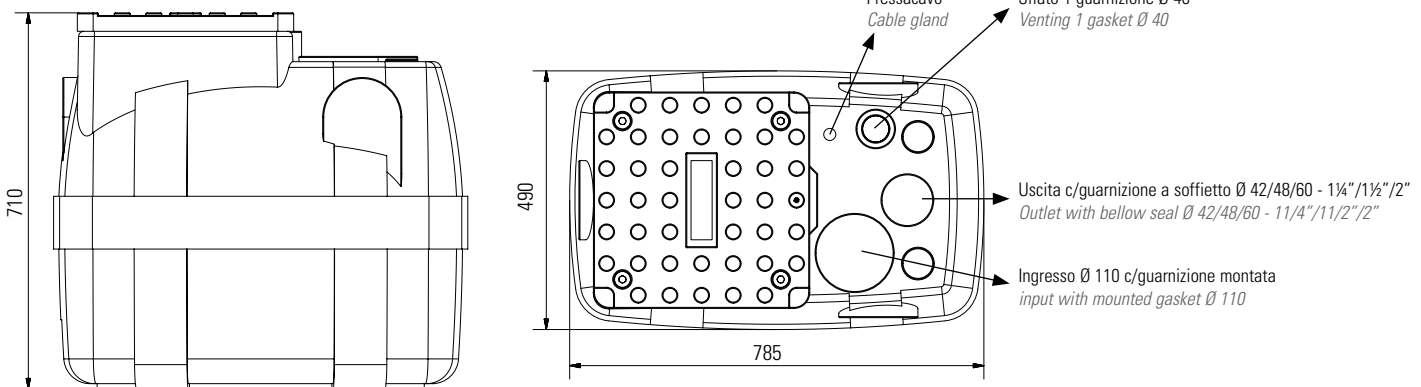
### DATI TECNICI | TECHNICAL DATA

Modello Model	Potenza Power		Diametro uscita Outlet diameter	Vtaggio Voltage	A Ampere Voltage	Portata max. Max. flow	Prevalenza max. Max. head	Max diam particelle Max. dia. of particle	Codice Code	€ cad € each
	kW	HP								
<b>LEOBOX100</b> solo vasca only tank			1"1/2						<b>1055010</b>	<b>380,00</b>
<b>LEOBOX100</b> con XKS 1000SW LEOvort with XKS 1000SW LEOvort	1.00	1.40				225 lt. min.	11 m.	35 mm.	<b>1055011</b>	<b>635,00</b>
<b>LEOBOX200</b> solo vasca only tank			2"						<b>1055020</b>	<b>548,00</b>
<b>LEOBOX</b> con XSP12 with XSP12	0.45	0.60	2"	230/50 (V/Hz)	2.7	200 lt. min.	8.5 m.	25 mm.	<b>1055021</b>	<b>890,00</b>
<b>LEOBOX</b> con XSP18 with XSP18	0.75	1.0	2"	230/50 (V/Hz)	4.2	300 lt. min.	12 m.	25 mm.	<b>1055022</b>	<b>940,00</b>
<b>LEOBOX</b> con XSP14 with XSP14	1.1	1.5	2"	230/50 (V/Hz)	6.2	233 lt. min.	7 m.	22.5 mm.	<b>1055023</b>	<b>990,00</b>

**DIMENSIONI | DIMENSION LEOBOX100**



**DIMENSIONI | DIMENSION LEOBOX200**



**Le versioni con elettropompa installata comprendono:**

- Valvola a palla
- Tubature in PVC
- Bocchettone 3 pezzi per lo sgancio rapido
- Passaparete completo di guarnizione
- Piastra di supporto in acciaio zincato

**The versions with electric pump inside include:**

- Ball valve
- PVC pipes
- Ppe union for quick release
- Bulkhead complete with gasket
- Support plate in galvanized steel

**DIAGRAMMA PRESTAZIONI | HYDRAULIC PERFORMANCE CURVE**

